

# MT95

## Miniature Linear Stage

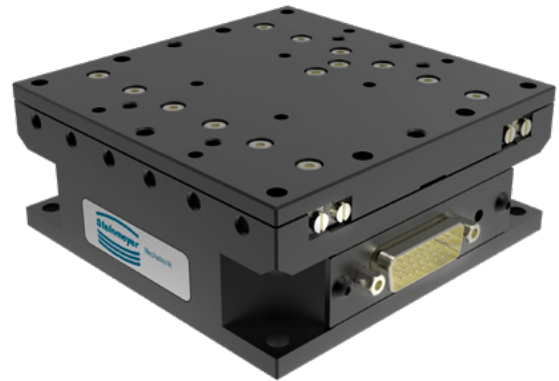
### Compact positioner with internal motor

Thanks to its cross roller bearings, the MT95 miniature linear stage provides excellent straightness and flatness. The drive is redirected with a toothed belt transmission and could thus be completely accommodated in the axis.

- Ideal for small installation spaces (95 x 95 x 40 mm)
- Repeatability up to  $\pm 1.5 \mu\text{m}$
- Easily stackable to compact multi-axis systems

#### Options:

- Available with DC motor or stepper motor
- 3-axis compact unit: MP95-3
- Version for clean room and vacuum on request



### Fields of application

Positioning in small spaces e.g. incubators, fiber positioning, camera and microscope positioners, aligners for vacuum chambers, setup of minimum space XYZ multi-axis systems, manipulator for industry and research, compact clean room positioning systems, wafer prober alignment



XY-Combination MP95-2  
Dimension 95 x 95 x 80 mm  
Stroke 40 x 40 mm



XYZ Combination MP95-3  
Dimension 145 x 95 x 130 mm  
Stroke 40 x 40 x 40 mm

### Recommended Motion Controllers

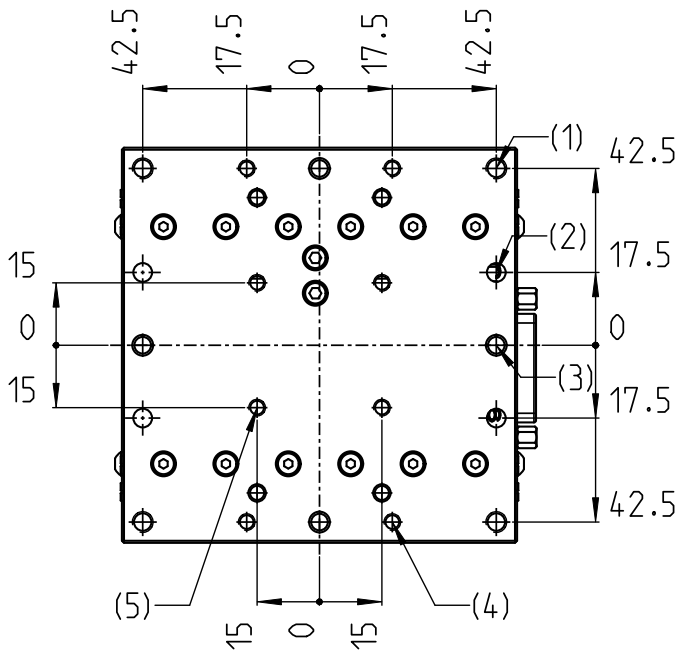
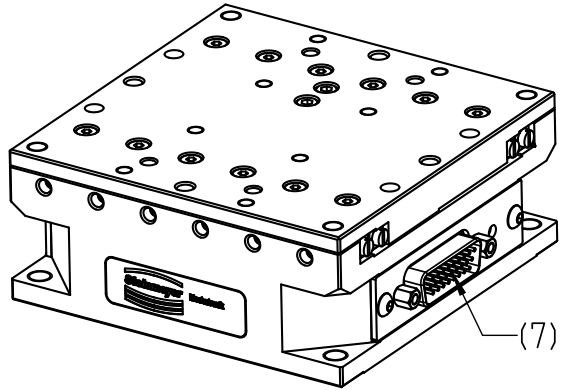
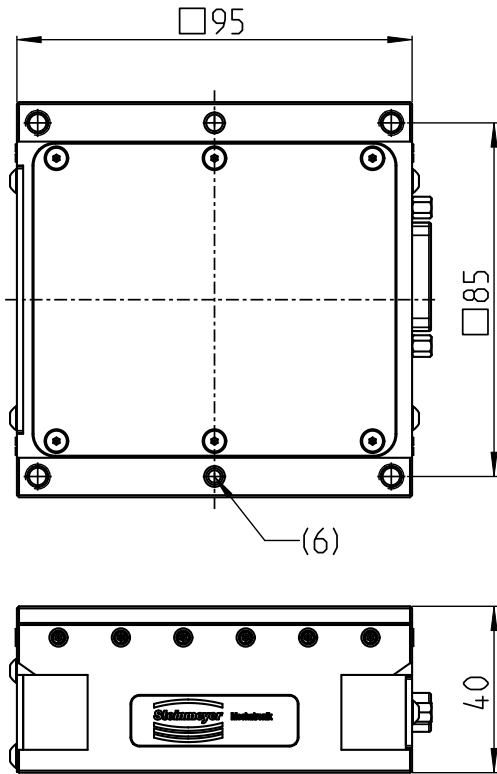
- FMC 220 (24 V)
- FMC 400/450 (48 V / 80 V track)
- Integration into ACS architectures
- Integration into PLC architectures

## Specifications

MT95		-40-DC-R	-40-SM
Travel	[mm]	40	40
Repeatability unidirectional	[ $\mu\text{m}$ ]	$\pm 1.5$	$\pm 2.1$
Repeatability bidirectional	[ $\mu\text{m}$ ]	$\pm 3.5$	$\pm 4.1$
Accuracy	[ $\mu\text{m}$ ]	$\pm 4.8$	$\pm 5.4$
Flatness	[ $\mu\text{m}$ ]	$\pm 2$	$\pm 2$
Straightness	[ $\mu\text{m}$ ]	$\pm 1.4$	$\pm 1.4$
Positioning speed	[mm/s]	1.1	5.8
Max. speed	[mm/s]	2.2	11.6
Max. acceleration	[m/s <sup>2</sup> ]	0.02	0.1
Max. load Fx	[N]	30	30
Max. load Fy	[N]	65	65
Max. load Fz	[N]	65	65
Max. torque Mx	[Nm]	3.2	3.2
Max. torque My	[Nm]	1.3	1.3
Max. torque Mz	[Nm]	1.1	1.1
Pitch	[ $\mu\text{rad}$ ]	$\pm 65$	$\pm 65$
Yaw	[ $\mu\text{rad}$ ]	$\pm 40$	$\pm 40$
Weight	[kg]	0.8	0.8
Length	[mm]	95	95
Width	[mm]	95	95
Height	[mm]	40	40
Motor		DC-Motor	Stepper Motor
Feedback		Motor-Encoder	Open Loop

Specifications are subject to change. Values are for the single axis with our controller. Parameters shown here are typical values for a standard configuration. By customization and given in depth knowledge of your application significantly improved values can be achieved. Please contact us.

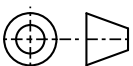
Dimensions / Interface



\*) positional accuracy between fits:  $\pm 0.04$

- 1) M5; max depth 4 (4x)
- 2) counterbore for screw DIN 912 / ISO 4782  
M4 (4x) used from top-side
- 3)  $\varnothing 4G7$ ; max depth 4 (4x)
- 4) M4; max depth 4 (4x)
- 5) M4; max depth 8 (4x)
- 6)  $\varnothing 4H7$ ; max depth 8 (2x)
- 7) terminal (number and types of connectors  
depending on selected equipment)

requirement on mounting surfaces: flatness 0.01 mm



drawingscale: 3:5  
metric system (mm)

Revision 09/2022  
Doc-Nr. 424135